

White's normal kingside attack is some way from fruition.

the two bishops. Now 24...Bh4 would fail to 25.Qxh4 Qxc3 26.Qh6 threatening 27.f6 mating.

Karpov bounces back

ANATOLY KARPOV made a speedy recovery from his miserable minus-one score at the European Teams Championship by winning a four-man double-round tourney in West Germany shortly afterwards. The 28-year-old Soviet World Champion beat West Germany's Robert Hubner (once) and Wolfgang Unzicker (twice), and drew both games with countryman Boris Spassky to score 4½ points out of 6. Hubner and Spassky finished on 3, Unzicker on 1½.

West Germany 1980

SICILIAN DEFENCE

A. KARPOV (USSR)	R. HUBNER (West Germany)
1. e4	c5
2. Nf3	d6
3. d4	cxd4
4. Nxd4	Nf6
5. Nc3	a6
6. Be2	e6

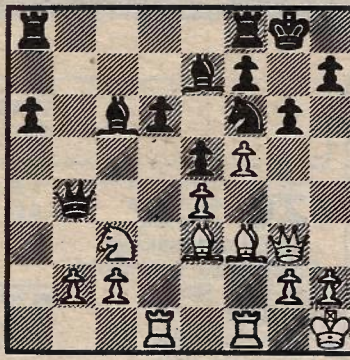
6. Be2 is Karpov's favourite "quiet" move against the aggressive Naidorf variation of the Sicilian defence. Black could also try 6...e5 as a more ambitious response.

7. O-O	Be7
8. f4	O-O
9. Kh1	Nc6
10. Be3	Bd7
11. Qe1	Nxd4
12. Bxd4	Bc6
13. Qg3	b5
14. a3	g6?

I prefer the less weakening 14...Qc7. Now Karpov begins the first of two unusual ideas in a standard type of position.

15. Bf3!	Qd7
16. Rad1	Qb7
17. f5	e5
18. Be3	b4
19. axb4	Qxb4

Initially this position looks quite promising for Black — he threatens to demolish the queenside pawns, and



20. Bg5! Karpov calmly offers his queenside pawns, calculating that by a neat juggling of pieces he can evade the major threats of the Black queen.

20. ...	Qxb2
21. Rd3	Qxc2
22. Bd1!	

A most original move to gain time — now White's queen overprotects the knight on c3.

22. ...	Qb2
23. Bxf6	Bxf6
24. Rxd6	

Prosaic but effective as White forks

24. ...	Bb5
25. Rf2	Qc1
26. Rxf6	Rac8
27. Rc2	Qa1
28. fxg6	hxg6

28...Rxc3 is crushing except for 29.gxj7 ch Kh8 30.Qxe5! Qxd1 ch 31.Rf1 discovered check. A novel way of defending one's back rank!

29. Rd6	Rc7
30. Qxe5	Rfc8
31. Qd5	

Karpov continues with an attractive mixture of defence and counter-attack. Now 31...Rxc3 allows mate in three with 32.Rxg6 ch Kf8 33.Qd6 ch. Additionally White threatens 32.Rd8 check, swapping a pair of rooks, when his win with an extra piece will be simple.

31. ...	Kg7
32. Qd4 ch	Kh7
33. Nxb5	Resigns

Black's queen on a1 is in fact en pris, and 33...Qxd4 34.Nxd4 will cost Black another piece.

MURRAY CHANDLER